

APPENDIX.

INVENTORY OF OBJECTS FOUND WITHIN THE TOMBS.

Indexed with reference to the text and illustrations, and the present location of the more important objects. The Pottery is described by reference to the Types on Plates XII.—XV.

REFERENCES.

Ash. Mus. . . .	Ashmolean Museum, Oxford.
Brit. Mus. . . .	British Museum, London.
Cairo Mus. . . .	The Museum at Cairo.
Fitz. Mus. . . .	FitzWilliam Museum, Cambridge.
Liv. Mus. . . .	Liverpool Municipal Museums.
Liv. Inst. Arch. . . .	Liverpool University Institute of Archæology.
MacGr. Coll. . . .	Collection of Rev. W. MacGregor at Tamworth.
Pr. Coll. . . .	Private Collection of ———

No. 01.

- i. Wood figure of girl (single plait of hair down back).
- ii. Figure from boat.
- iii. Beads of blue glaze, ball and bar.
- iv. Claw of an animal.

No. 08.

Scribe's palette with inks (red and black) and pens. (Liv. Inst. Arch.)

No. 09.

Wooden doll with string hair. Fig. 150, p. 152. (Liv. Inst. Arch.)

No. 1. TOMB OF ANTEF, SEMER UARTI, pp. 54-65.

- i. Sailing boat with canopy. Fig. 46 and Frontispiece. (Liv. Inst. Arch.)
- ii. Rowing boat. Fig. 45. (MacGr. Coll.)
- iii. Baking scene. Fig. 51. (MacGr. Coll.)
- iv. Figure of bull following man. Fig. 48. (MacGr. Coll.)
- v. Small brewing scene. Fig. 50. (MacGr. Coll.)
- vi. Four sandals. Fig. 49. (MacGr. Coll. and Liv. Inst. Arch.)

No. 1—continued.

- vii. Two head rests. Fig. 49. (MacGr. Coll. and Liv. Inst. Arch.)
- viii. Figure of girl carrying basket and two geese. Fig. 47. (Liv. Inst. Arch.)
- ix. Model of granary. Fig. 44. (Liv. Inst. Arch.)
- x. Coffin with formulæ. (Pl. vii.) (MacGr. Coll.)

No. 4. Pottery, Types 3, 21, 42.

No. 6.

Objects :

- i. Flint knife. Fig. 96, p. 107.
- ii. Three fragments of inscribed clay.
- iii. Blue glazed ball beads.
- iv. Two blue glazed pendants.
- v. Small fish, bronze.
- vi. Shell.

Pottery, Types 2, 15, 26, 39.

No. 7. Pottery, Types 2, 4, 13, 15, 24, 40, and three dishes.

No. 8. Pottery, Types 2, 3, 5, 6, 8, 13, 15, 21, 40.

No. 9. Pottery, Types 26, 32, 39, 40.

No. 10. Pottery, Type 41.

No. 12. Pottery, Type 9.

No. 14. Pottery, Types 9, 15, 25, 26, 39, 40.

No. 16. TOMB OF KHNEH-HETEP AND OTHERS.
(Pl. vii.)

Objects :

- i. Two scarabs, amethyst and green stone, uninscribed. One with coil pattern.
- ii. Blue glazed pendant.
- iii. Model of man in civil dress.
- iv. Small electrum pendant.
- v. Remains of sailing boat, rowing boat and granary.

Pottery, Types 2, 3, 52, 55, and two model granaries.

No. 17.

Object :

Plain wooden coffin containing remains of a jackal.

Pottery, Type 45, and seven pottery dishes.

No. 18.

Objects :

- i. Small mirror of copper.
- ii. Leg of earthenware figure.

Pottery, Type 39.

No. 19.

Objects :

- i. Three figures from granary, and baking scenes.
- ii. Two figures from boats.
- iii. Oars painted with black circles.
- iv. Figure of armed man.
- v. Shells.
- vi. Two ball beads.

No. 21. Pottery, Types 1, 8, 25, 40, and two dishes.

No. 23. TOMB OF NEKHT, *nebtper*, AND OTHERS. (Pl. vii.)

Objects :

- i. Wig of long haired doll. (Liv. Inst. Arch.)
- ii. Wooden measure, 14 cm. long (broken).
- iii. Scarab.

No. 23—continued.

- iv. Portion of granary.
- v. Remnants of small rowing boat.
- vi. Three fragments of upright alabaster vase.
- vii. Shell.

Pottery, Types 13, 24, 25, 32, 37, 41, 46, and three dishes.

No. 25.

Objects :

- i. Figures and fragments of model boats.
- ii. Blue bead.
- iii. Figure of men carrying basket.

Pottery, Type 32.

No. 26.

Objects :

- i. Remains of sacrifice and brewing.
- ii. Man with basket, complete.

Pottery, Types 1, 2, 21, 26 (two), 32, 37, 38, 39.

No. 27.

Objects :

- i. Beads, blue glazed (ball and oval).
- ii. Small round open basket.

Pottery, Types 15, 26, 32, 40, 42.

No. 30.

Objects :

- i. Two winnowing fans. Fig. 122. (Cairo Mus.)
- ii. Steering oar.

Pottery, Types 37, 42.

No. 35. Pottery, Types 3, 26 (two), 32, 37, 39, 41, 46.

No. 36.

Objects :

- i. Flint knife. Fig. 96. (Liv. Inst. Arch.)
- ii. Figures from boat, and industrial scene.
- iii. Piece of coloured coffin.
- iv. Prow of rowing boat.
- v. Hawk-headed steering post.
- vi. Figure of man from same boat.
- vii. Piece of string.
- viii. Model of girl. Peculiar dress. Fig. 36. (Liv. Inst. Arch.)

Pottery, Types 37, 42.

No. 37.*Objects :*

- i. Pieces of alabaster vase.
- ii. Small marble kohl pot.
- iii. Small flint knife.

No. 39. TOMB OF REDET-ANKH. (Pl. vii.)*Objects :*

- i. Coffins, painted and plain.
- ii. Beads, amethyst and carnelian.
Fig. 100. Tube bead, spiral pattern in black. Minute blue beads.
- iii. Circular basket, open.
- iv. Small circular basket, covered, upright sides.
- v. Scarab with coil pattern.
- vi. Three uninscribed scarabs of green felspar, amethyst, and carnelian.

No. 41.*Objects :*

- i. Portion of basket.
- ii. Models of steering oar, masts and yards of boat.
- iii. Models of labourers' implements and oars.
- iv. Model wood door of granary.
- v. Blue marble kohl vessel. Fig. 110.
- vi. Two beads and pendant.
- vii. Flint knife.

Pottery, Types 13, 15, 26, 38, 39, 40, 42, 46.

No. 42.

Object : Throwing stick. Fig. 166.

No. 43. TOMB OF REDET-HETEP AND OTHERS. (Pl. vii.)

Fragments of inscribed coffins.

No. 44.*Objects :*

- i. Fragments of veneer and ivory inlay.
- ii. Fragments of alabaster bowl.
- iii. Small alabaster vessel.

Pottery, Types 2, 25, 26 (two), 35, 37 (two), 39 (two).

No. 45.*Objects :*

- i. Large amethyst scarab (2.56 × 1.8 cms.).
- ii. Four blue glazed ball beads.
- iii. Wooden implement (? shovel).

Four Pottery Dishes.

No. 47. TOMB OF NEKHT. (Pl. vii.)

Pottery, Types 13, 25, 26.

No. 48. TOMB OF HENU. (Pl. vii.)

Pottery, Type 26, and two dishes.

No. 49.*Objects :*

- i. Small figures from boat and brewery.
- ii. Fragments of bed.
- iii. Three figures in curious attitudes.

No. 51.*Object :*

Rump of glazed hippopotamus.

Pottery, Types 13, 15, 37.

No. 53. TOMB OF NETER-NEKHT. (As in Pl. vii., No. 23, e.)*Objects :*

- i. Fragment of bronze implement.
- ii. Remains of brewery scene.

Pottery, Types 15, 26, 37, 39, three dishes and four pieces of irregular types.

No. 54.*Objects :*

Blue glazed beads and pendant.

Pottery, Types 4 (small example), 13, 15, 21, 37.

No. 61. TOMB OF NEFER AND NEKHT. (Pl. vii.)*Objects :*

- i. Pendant (blue glazed).
- ii. Tubular bead (blue glazed).
- iii. Two cowry shells.

Pottery, Types 2, 3, 4, 6, 13, 16, 21, 25, 26 (two), 32, 39, 46, and broken pottery stand.

No. 62.*Objects :*

- i. Tubular beads (blue glazed).
- ii. Seeds.

Pottery, Type No. 46 and three dishes.

No. 64.*Objects :*

- i. Remnants of brewery and granary scenes.
- ii. Steering oar from model boat.
- iii. Parts of two clay birds.
- iv. Part of clay figure.
- v. Broken alabaster vase.
- vi. Carnelian and blue glazed pendants.

Pottery, Types 2, 37.

No. 65. TOMB OF SENU-ATEF, RED-HETEP,
AND MERÜ. (Pl. vii.)*Objects :*

- i. Blue glazed figure, height 11 cms.
Fig. 140.
- ii. Large kohl palette.
- iii. Head rest of wood.
- iv. Small blue glazed ring beads,
small black ball beads, blue
glazed ball beads, double cone
beads (blue glazed). Fig. 100.
- v. One cowry shell.
- vi. Two scarabs: *a*, green, decorated;
b, carnelian, plain.
- vii. Alabaster kohl vessel without lid.
Fig. 110.
- viii. Small alabaster vase. Fig. 110.
- ix. Part of small basket.
- x. Hair (?).
- xi. String of amethyst ball beads,
blue glazed beads, ball and bar,
small bar beads, blue glazed.

Pottery, Type 39, and one dish.

No. 67.*Objects :*

- Impressions of scarab seals upon
mud seals of jars.

Pottery, Types 1, 2, 3, 13, 26 (three), 35 and

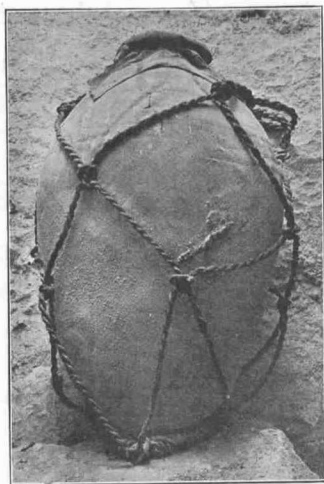


FIG. 228.—POTTERY VESSEL ROPED AND
SEALED. TOMB 67.

No. 67—continued.

47 (several). Fig. 228. Dishes, small
and large, and bird-shaped pottery
object. Fig. 97.

No. 71.*Objects :*

- i. Carnelian scarab.
- ii. Three bronze implements.
- iii. One flint scraper.

Pottery, Types 3, 6, 7 (two), 8, 15, 23, 25,
32, 37.

No. 73.*Objects :*

- i. Large blue-glazed bar-beads from
collar.
- ii. Two large blue glazed semi-circular
attachments for collar of beads.
- iii. Wooden bead.

Pottery, Types 15, 17.

No. 74.

Pottery, Types 1, 2, 3 (two), 4 (small), 8, 9,
25 (four), 26 (five), 38 (three), 39.

No. 75. TOMB OF NETERU-HETEP. (Pl. vii.)*Objects :*

- i. Coffin, painted and inscribed.
Figs. 171, 172. (Cairo Mus.)
- ii. Alabaster vase of two colours.
- iii. Kohl vessel and lid of green
marble, kohl vessel and lid of
blue-white marble. Fig. 110.
- iv. Plate of stone, flat and semi-
circular.
- v. Ka figure enclosed in side of coffin.
Fig. 93. (Cairo Mus.)
- vi. Painted steering oar, poles, masts,
etc., from a boat.
- vii. Head rest (wood).
- viii. Two flint scrapers
- ix. Knife of bronze.

Pottery, Types 3, 13, 21, 26, 37, 41
(fifteen pieces in all).

No. 76.*Objects :*

- i. Remnants of brewery.
- ii. Wood figure of girl carrying basket
on head.
- iii. Two wood figures (peculiar atti-
tudes).
- iv. Figure of scribe in clay.

No. 76--continued.

- v. Part of armoured deck house and figures from boat.
- vi. Part of sacrifice of bull.
- vii. Part of wooden head rest.

Pottery, Types 15, 21, 26 (three), 42, 46.

No. 81. TOMB OF NEFERA AND ARÏT-HETEP.
(Pl. vii.)*Objects :*

- i. Faience dish, 7·8 cms., decorated with lotus pattern. Fig. 140. (MacGr. Coll.)
- ii. Three figures: Man with sack on back (from granary), steering man (from boat), figure of woman (from baking scene).
- iii. Part of head rest of six pedestals. (Like Fig. 112.)
- iv. Remnants of granary, including scribe with hieratic writing on palette. Fig. 92. (Liv. Inst. Arch.)
- v. Fragments of coffin inscribed with texts.
- vi. Wooden model of four goblets on stand.
- vii. Wooden figure like a shawabti. Fig. 92.

Pottery, Types 1, 4 (small), 9, 13, 15, 17, 19, 26, 32, 42, 45.

No. 83.*Objects :*

- i. Seeds (size of pea) threaded together with small blue glazed beads.
- ii. Lid of alabaster vase.

Pottery, Type 37, and two dishes.

No. 85. TOMB OF AMENY.*Objects :*

- i. Large stela of limestone, with name of Heftt. Fig. 191.
- ii. Two small circular baskets.
- iii. Three seeds.
- iv. Two globular beads.
- v. One small carnelian scarab.
- vi. Flint knife.
- vii. Wooden coffin fragments of Amenÿ.

Pottery, Types 1, 8, 15, 25, 38, 39, 46.

No. 87. TOMB OF NEKHTA.*Objects :*

- i. Small string bag. Fig. 116. (Liv. Inst. Arch.)
- ii. Seeds.
- iii. Blue glazed globular beads.

Pottery, Types 3, 6, 7, 13. Two dishes and irregular forms.

No. 90. TOMB OF NEKHTA AND HETEPU.*Objects :*

Coffins inscribed with formulæ.

Pottery, Types, 3, 25, 39, 42.

No. 94. TOMB OF KHNEMU AND SENU.*Objects :*

- i. Two flint knives.
- ii. Bar-shaped beads of blue and black glaze.
- iii. Two large blue glazed semi-circular attachments for collar of beads.
- iv. Shell.

Pottery, Types, two irregular forms.

No. 96. TOMB OF KHNEM-HETEP AND REDET-HETEP.*Objects :*

- i. Blue glazed tubular beads.
- ii. Remains of armoured boat.
- iii. Tall masts and yards from model boats.
- iv. Model of water pitcher and other portions of industrial groups.
- v. Box with four compartments, probably canopic box.

Pottery, Types 6, 13.

No. 97.*Objects :*

- i. Remnants of rowing and sailing boats.
- ii. Three wood figures, two male, one female (fringe round waist).
- iii. Copper axe.

Pottery, Types 1, 4 (small), 13, 15, 26.

No. 105.*Objects :*

- i. Head rest.
- ii. Remnants of granary and small boat.

No. 105—continued.

- iii. Portion of girl's figure carrying birds.
- iv. Figure with beard like the Aamu Shêkh.

Pottery, Types 4 (two), 6, 7, 13, 15, 21, 25, 26, 40.

No. 106.*Objects :*

- i. Portion of doll figure.
- ii. Portion of wooden model.
- iii. Wooden head rest.

Pottery, Types 7, 13, 15, 26 (two), 39, 40, and three dishes.

No. 107.*Objects :*

- i. Canopic box. Figs. 184, 185. (Pr. Coll. The Lady O'Hagan.)
- ii. Parts of a coffin inscribed with texts.
- iii. Scribe of granary (standing).
- iv. Oars from model boat.
- v. Mirror of copper.

No. 111.*Objects :*

- i. Ivory comb.
- ii. Fragments of wooden models.

Pottery, Types 4 (small), 5, 15, 25, 40.

No. 112. TOMB OF HETHER-EM-HAT.*Objects :*

- i. Remnants of model boat and industrial groups.
- ii. Four models in shape of cones.

Pottery, Types 2, 17, 24, 33.

No. 113.*Objects :*

- i. Blue ball beads.
- ii. Ivory pendant.

Pottery, Types 1, 5, 8, 13, 15, 39.*

No. 114.*Objects :*

- i. Ivory knife.
- ii. Ivory spoon.
- iii. Model copper chisel.
- iv. Wooden vessel, probably for kohl.
- v. Small kohl vessel in basket.

No. 114—continued.

- vi. Fragments of model of brewery.
- vii. Alabaster vessel.

No. 116. *a*, TOMB OF NEFERÿ, PHYSICIAN; *b*, OF MER-ER-UT; *c*, OF ER-DE-NES. *Vide* pp. 65-79. (The whole tomb-group of Neferÿ is re-arranged in its original position in the Museum of Cairo.)

Objects :

- i. Two painted and inscribed coffins of Neferÿ.
- ii. Rowing boat of twenty oars. Figs. 57, 58.
- iii. Sailing boat with thirteen figures. Fig. 59.
- iv. Wood figure of girl with basket on head and pigeon in hand. Fig. 64.
- v. Figure of man carrying large pitcher. Fig. 64.
- vi. Scribe's writing board (36.5 cms. x 18 cms.), palette, pens and ink. Fig. 65.
- vii. Bread-making scene, three figures. Fig. 63.
- viii. Brewing scene, seven figures. Fig. 62.
- ix. Model of granary, four figures. Fig. 60.
- x. Group of model implements: remains of bag in which they were kept. Fig. 66.
- xi. Remains of sacrifice. Bull, boats, brewery (in poor condition).
- xii. Leg of chair.
- xiii. Remains of a model granary.
- xiv. Remains of rowing boat, oars and figures.
- xv. Combined brewery and sacrifice, six figures.
- xvi. Glazed scarab, decorated with scroll pattern.

Pottery, Types 15 (two), 25,* 26.* Two small dishes.

No. 118.*Objects :*

- i. Three alabaster vases.
- ii. Wooden head rest (broken).
- iii. Three blue glazed beads.

* Denotes the specimen figured.

No. 118—continued.

Pottery, Types 26, 30,* 46, and two unusual forms.

No. 120. COFFIN OF KHNEÜ[Y].

Pottery, Types 14, 46* (three), 47.

No. 121.

Objects :

Blades of two wooden hoes. Fig. 122. (Ash. Mus.)

No. 122.

Object :

Flint knife. Fig. 96.

No. 123.

Objects :

Glazed spheroidal beads.

Pottery, Type No. 6.*

No. 124. COFFIN OF KHNEÜ-HETEP.

Pottery, Type 45 (two), four pottery dishes.

No. 125.

Object :

Model mace. Fig. 145. (MacGr. Coll.)

Pottery, Type 45 (two), 46, 47.

No. 127.

Objects :

Blue glazed bar-shaped beads.

No. 128. TOMB OF ANKH. . . .

Objects :

i. Painted fragments of wood, probably from coffin.

ii. Wooden pins.

Pottery, Type 47,* and three pottery dishes.

No. 130. TOMB OF NEKHT.

Object :

Small coffin containing bones. Fig. 188. (Liv. Inst. Arch.)

No. 132. TOMB OF USERHET, A WARRIOR. P. 173.

Objects :

i. Painted coffin of Userhet. Fig. 180. (Liv. Inst. Arch.)

ii. Inner coffin, moulded. Fig. 181. (Fitz. Mus.)

No. 132—continued.

Pottery, Types 9, 19,* 24, 36,* 38,* 39, 40, 57.*

No. 134. TOMB OF SENBY AND NETER-NEKHT. (Pl. viii.) Vide Fig. 37.

Objects :

- i. Wooden head rest.
- ii. Mat.
- iii. Canopic box of wood, inscribed. Fig. 187, p. 179. (Liv. Inst. Arch.)
- iv. Four canopic vases of wood, painted green.
- v. Wooden coffins.

No. 135. COFFIN OF NEKHT.**No. 137. TOMB OF NETER-NEKHT.**

Objects :

- i. Flint scraper and flint core.
- ii. Remnants of model boat.
- iii. Alabaster vase with two metal implements.
- iv. Mixed beads of glazed shell and carnelian.
- v. Two clay figures on stand. (Pl. xi.) Fig. 206.
- vi. Red clay pendant.
- vii. Small alabaster vessel, with two pieces of bronze.

No. 139.

Objects :

- i. Wooden block painted yellow.
- ii. Steering-oar (broken).
- iii. Two flint scrapers.
- iv. Part of sandal.
- v. Small piece of painted wood.

Pottery, Type 26, and one dish.

No. 140.

Objects :

- i. Blue glazed ball beads.
- ii. One seed.
- iii. Boat containing mummy with mourning figures.
- iv. Boat, hollow.
- v. Figures from boat.
- vi. Two masts with metal top and rings.
- vii. Two model axes.
- viii. Marble kohl pot and lid.

Pottery, Types 2, 3, 5, 37, 41, four dishes

No. 143. Pottery, Type 3.*

No. 162. Pottery, Type 21.*

No. 163. COFFIN OF USER[TA], STELA OF USER-HET[A]. Fig. 192. (Newport Mus.)

No. 166.

Objects :

Stone dresser's level. Fig. 128, p. 130. (Pr. Coll. H. Martyn Kennard.)

Pottery, Types 1, 5, 13, 15, 24, 42, 43, and several dishes.

No. 171.

Objects :

- i. Alabaster vase.
- ii. Two small bronze implements.
- iii. Ribbed ball beads of glaze.
- iv. Remains of model war vessel, including armoured deck house, shields, etc.
- v. Remains of model of sacrifice of bull.
- vi. Remains of scene of brewing and baking.

Pottery, Types. Pottery objects shaped like birds. (Pl. xi.)

No. 172. COFFIN OF HETEP.

No. 177. TOMB OF NEFER-Y AND USERHETA.

Objects :

Blue glazed beads, ball and bar.

Pottery, Types 1, 5,* 15, 26, 39.

No. 180. TOMB OF HETEP-Y.

Objects :

- i. Faience vase (plain), 4 cm. with lid. (MacGr. Coll.)
- ii. Fragments of painted coffin.

Pottery, Types 4 (small), 9, 17, 21.

No. 181. TOMB OF USER-Y(?) AND ARYT-HETEP.

Objects :

- i. Fragments of model boats.
- ii. Fragments of model granary.
- iii. Model of foreign woman carrying child on back in shawl. Fig. 140. (Pr. Coll. F. Hilton Price.)
- iv. Blue beads and pendants.
- v. Metal pendant disc.
- vi. Model of hoe.
- vii. Streaked alabaster vase with lid.

No. 181—continued.

- viii. Round-bottomed vase with fluted neck.
- ix. Small alabaster kohl vase with lid.
- x. Large alabaster lid.
- xi. Part of flint knife.

Pottery, Types 9, 23, 25, 38.

No. 183. TOMB OF DEDYŦ-BAQT.

Objects :

- i. Large round basket with conical lid. Fig. 114. (Pr. Coll. H. Martyn Kennard.)
- ii. Legs and seat of chair. Fig. 115.
- iii. Large earthenware pot in rope sling.
- iv. Large mat (reeds). Fig. 160. (Ash. Mus.)
- v. Arrow case. Figs. 159, 160. (Cairo Mus.)
- vi. Broken bow. Fig. 160.
- vii. Wooden head rest.
- viii. Four-legged table. Fig. 117. (Cairo Mus.)
- ix. Large drum. Fig. 155. (Cairo Mus.)
- x. Two legs of chairs.
- xi. Stairs of model granary and part of side.
- xii. Piece of cloth.
- xiii. Stamped leather gourd. Fig. 128. (Ash. Mus.)
- xiv. Mask of decorated cartonage. Fig. 183. (Liv. Inst. Arch.)

No. 186. TOMB OF NEFWA. (Pl. vii.). Pp. 79-89. GOOD NAME: MEHTI-EM-HAT.

Objects :

- i. Group of nine model implements.
- ii. Two sandals. Figs. 71, 78.
- iii. Fluted head rest. Fig. 78.
- iv. War boat with armoured canopy and sail, black soldier with bow and arrow, and two officers playing draughts. Fig. 142. (Ash. Mus.)
- v. Sailing boat with sail and canopy. Eight figures. Fig. 72. (Cairo Mus.)

No. 186—*continued*.

- vi. Rowing boat. Twelve figures. Fig. 74.
- vii. Rowing and sailing boat. Fig. 73. (Cairo Mus.)
- viii. Sail of boat.
- ix. Cartonage. Fig. 79. (Cairo Mus.)
- x. Model of girl (basket on head and two birds in hand). Fig. 77. (Cairo Mus.)
- xi. Smaller figure of girl—same as above. Fig. 77. (Cairo Mus.)
- xii. Model of granary with five figures. Fig. 76. (Cairo Mus.)
- xiii. Combined scene—baking, sacrifice, brewing. Eight figures. Fig. 75. (Cairo Mus.)
- xiv. Canopic box. Fig. 185. (Cairo Mus.)

Pottery, Four dishes.

No. 187.

Objects :

- i. Bent male figure (clay).
- ii. Two dôrn nuts.
- iii. Decayed figures from boat.
- iv. Pair of sandals, decayed.
- v. Wooden head-rest, decayed.
- vi. Stone mortar.

Pottery, Types 15, 41 (two), 47 (five), and four dishes.

No. 188. TOMB OF ARYT-HETEP.

Objects :

- i. Figures from model rowing boat.
- ii. Remains of sailing boat.
- iii. Remnants of rowing boat of ten oars, with steersman.
- iv. (?) Remains of another boat.
- v. Door of model granary.
- vi. Vessels of complete brewery scene, and two female figures.

Pottery, Types, pottery of object shaped like a bird.

No. 194.

Object :

Figure of girl (basket gone from head).

No. 202. TOMB OF NEFERT-HAPA.

Objects :

- i. Beads of carnelian, quartz, and blue glaze (both small and bar shaped); two seeds.
- ii. Wooden head rest, with six supports. Fig. 112, p. 119. (MacGr. Coll.)
- iii. Fragments of wooden coffin.

No. 203.

Objects :

- i. Beads: small, ball-shaped of glaze; small, brown and yellow; with some of carnelian, and one shell.
- ii. Figures from model of granary, being a scribe and a man with a basket.
- iii. Two figures from a model of sacrifice.
- iv. Figures of men from rowing boat of four pairs oars.
- v. Figure of men from rowing boat of three pairs oars.
- vi. Figure of men from sailing boat, ten figures, including two singers on seat.
- vii. Model of a sailing boat. (Pr. Coll. Mr. John Rankin.)

No. 211. HOR-HE-REKHYT-HETEP.

Objects :

- i. Model sailing boat with double steering oar, look-out, two sailors hoisting sail, and helmsman.
- ii. Stela with name. Fig. 193. (Liv. Inst. Arch.)

No. 212.

Objects :

- i. Figure of man carrying torch.
- ii. Figure of man carrying basket on back.
- iii. Figures from model rowing boat; eight oarsmen, look-out and steersman; also seven oars and steering pole.
- iv. Remains of sailing boat, with look-out and steersman.
- v. Part of model of sacrificial bull.
- vi. Part of wooden box.
- vii. Remains of brewing group, with a water-carrier.

No. 215.*Objects :*

- i. Portions of two head-rests (one fluted).
- ii. Beads, blue glazed, and one of carnelian.
- iii. Small scarab, green felspar, un-inscribed.

No. 220.*Objects :*

- i. Ostrich's egg.
- ii. Fragment of alabaster.

No. 242.*Object :*

Kohl palette.

Pottery, Types 15, 25.

No. 257.*Objects :*

- i. Large copper mirror (broken).
- ii. Two metal pendants.
- iii. Piece of crystal.
- iv. Two scarabs.

No. 258. TOMB OF HETHER-HETEP.*Object :*

Fragments of coffin.

No. 260.*Objects :*

- i. Three seeds (size of nutmegs).
- ii. Part of model granary, with door and metal fastenings.
- iii. Flint knife.

Pottery, Types 13, 15, 16, 26 (two), 45.

No. 261.*Objects :*

- i. Remnants of boat.
- ii. Copper models.
- iii. Shell.

Pottery, Types 13, 15, 19, 32, 39.

No. 262.*Objects :*

- i. Figure holding two birds.
- ii. Remnants of boat and brewery
- iii. Flint scraper.

No. 263. TOMB OF THET-THA.*Objects :*

- i. Figures from large boat.
- ii. Small alabaster dish (handle broken away).

No. 263—continued.

- iii. Alabaster vase with lid.
- iv. Model shield.
- v. Model draught board (?).
- vi. Fragments of coffin.

Pottery, Types 3, 15, 24, 26 (three), 33, 39.

No. 264. TOMB OF SETEN-EN-HETEP.

- i. Remains of wooden models of industries.
- ii. Model boat and numerous figures (decayed).
- iii. Figure of girl with geese (decayed).
- iv. Remnants of granary and sacrifice.
- v. Small beads of amethyst and carnelian.
- vi. Pendant of earthenware.
- vii. Remains of two alabaster vases.
- viii. Portions of wooden coffin.

Pottery, Dish.

No. 267. *Pottery*, Types 2, 17, 25, 40, 46.**No. 268.***Objects :*

- i. Portion of head-rest.
- ii. Figures from boat.
- iii. Figures from granary.
- iv. Kneading-board from model of bread-making.
- v. Scribe with hieratic writing on writing table.
- vi. Joined block of wood.

Pottery, Type 25.

No. 269. TOMB OF ZA'AY.*Objects :*

- i. Numerous remains of model boats, brewery, and sacrifice, granary.
- ii. Remains of war boat, with model shield, etc.
- iii. Pulley block, model.
- iv. Blue glazed beads, three ball shaped, a number small, two bar shaped, and a pendant, probably from a collar like Fig. 101.
- v. Flint knife.
- vi. Remains of wooden coffin.

Pottery, Types 1 (two), 4 (small one), 6 (one), 9 (two), 15 (three), 24 (two), 26 (eight), 32 (one), 37 (three), 39 (two), 41 (one).

No. 270. TOMB OF MERÛT-HEN.*Objects :*

- i. Scribe's palette, probably from model granary.
- ii. Figures from boat and granary.
- iii. Glazed ball beads.
- iv. Prow of model boat.
- v. Rope work.
- vi. Beard of wood from cartonage.
- vii. Fragments of wooden coffin.

No. 271. TOMB OF HA-HETEP.*Objects :*

- i. Wooden box and jars.
- ii. Figures from boat with canopy.
- iii. Portions of model representing brewing.
- iv. Portions of model granary.
- v. Head rest.
- vi. Fragments of wooden coffin.

Pottery, Types 15, 26, and dishes.

No. 272.*Objects :*

- i. Remains of rowing boat with five or six pairs of oars, with seated figures.
- ii. Remnants of boat of seven or eight pairs of oars, with small seated figures.
- iii. Arm of tall figure.
- iv. Twenty-five figures of men, probably from two other boats.
- v. Portions of model representing industries, with seven figures.
- vi. Remains of large brewery scene (nine objects).
- vii. Figure of scribe from granary; tubs, etc. (eight), from granary.

No. 275. TOMB OF ZA'AY, found undisturbed.
(Deposited by Mr. H. Martyn Kennard in the Brit. Mus. of Nat. Hist., S. Kensington.)

Objects :

- i. Model of sailing boat, with seven figures.
- ii. Model of rowing boat, with ten figures.
- iii. Small granary, with six figures.
- iv. Model of man feeding an ox. Fig. 123, p. 126.

No. 275—continued.

- v. Model of bakery.
- vi. Figure of girl carrying basket on head.
- vii. Butcher with leg of ox. Fig. 95, p. 105.
- viii. Leather worker. Fig. 129, p. 131.
- ix. Small group, man with hoe, etc., making bricks. Fig. 129.
- x. Figures of two girls.
- xi. Torch carrier (no torch).
- xii. Brewer with tub and jar.
- xiii. Male figure, standing.
- xiv. Wooden head rest.
- xv. Pair of sandals.
- xvi. Four staves.
- xvii. Thin model implements of copper.
- xviii. Coffin with formulæ only.

No. 276.*Objects :*

Figures and oars from model boat.
Pottery, Types, 1, 15* (four), 16, 26, 40, 50,* and three dishes.

No. 277.*Objects :*

- i. Wooden mask and front of cartonage painted, but decayed.
- ii. Female figure with basket on head.
- iii. Fragments of painted and inscribed coffin.

No. 278.*Objects :*

- i. Part of brewery scene, five figures.
- ii. Figure of man sacrificing.
- iii. Remnants of small boat.

No. 279. TOMB OF SEN-Â.*Objects :*

- i. Figure of girl (dressed).
- ii. Stern half of boat, with ten figures, and two canopies from boats.
- iii. Sacrificial ox.
- iv. Brewer's tub.
- v. Wooden handle.
- vi. Eight metal models of implements, and one with wooden handle.
- vii. Palm-leafed capital in wood. Fig. 139, p. 161. (Pr. Coll. H. Martyn Kennard.)
- viii. Portions of wooden coffin.

No. 280.*Object :*

Model of bull from sacrifice.

No. 283. TOMB OF USER-NEKHT.*Objects :*

- i. Traces of small sailing boat—figures in civil dress.
- ii. Traces of small domestic group (much worm eaten).
- iii. Stairs of granary.
- iv. Armless painted figure.
- v. Small white painted figure.
- vi. Painted seat with painted figure (in bad condition).
- vii. Portions of painted coffin.

No. 284. PORTIONS OF INSCRIBED COFFINS OF ANT-ET-ES, ARYT-HE-TEP, HER-NEKHT, NEKHT-ANKH.**No. 285.***Objects :*

- i. Two stooping figures.
- ii. Part of granary.
- iii. Fragments of two boats, in bad condition.
- iv. Figure representing mummy from a funereal barque.
- v. Model of ox's leg in wood.
- vi. Jar.
- vii. Piece of wood.

No. 287. TOMB OF SENU-ATEF AND OTHERS.

Figs. 152, 182, 287.

- i. Rowing boat with lotus prow and crew, eight figures (partly destroyed).
- ii. Sailing boat with crew (decayed, partly destroyed).
- iii. Remnants of model granary, brewing scene, etc. (in poor condition).
- iv. Beads of carnelian, silver, shell, and green glaze (bar shaped and ball shaped). Also two glazed semi-circular attachments for collar of beads (as in Fig. 101).
- v. Scarab with name MER-URT(?), and one other uninscribed.
- vi. Two gold rings.
- vii. Cowries of silver and one of stamped leather.
- viii. Rectangular kohl box, inlaid with ebony and ivory, four tubes (Fitz. Mus.); another of four tubes. Fig. 108.

No. 287—continued.

- ix. Wooden box inlaid with ebony, with sliding lid tied with string, and four legs. Fig. 109. (Pr. Coll. F. H. Price.)
- x. Kohl box of plain wood.
- xi. Small kohl vessel of wood, inlaid with ivory and ebony, top tied with cloth. Height 4 cms., width 3.5 cms. Fig. 109. (Ash. Mus.)
- xii. Small kohl vessel of wood with two tubes. Fig. 109.
- xiii. Wooden dish with rosette pattern. Fig. 109. (Fitz. Mus.)
- xiv. Small scalpel, hooked knife, and double edge knife with wooden handle. Fig. 109; *vide* also p. 196.
- xv. Vase of alabaster covered with cloth. Fig. 109.
- xvi. Large round basket containing dôms nuts. Fig. 113.
- xvii. Medium sized basket containing cloth and jar.
- xviii. Jar of black pottery with handle from xvii.
- xix. Small basket, empty.
- xx. Basket containing hair.
- xxi. Basket containing the two inlaid kohl vessels No. viii. Fig. 108.
- xxii. Oval basket with lid, of fine texture.
- xxiii. Two wooden head rests, plain, as in Fig. 113.
- xxiv. Wooden folding head rest with metal rivet. Fig. 113. (Pr. Coll. Mr. J. Rankin.)
- xxv. Frame of bed. Fig. 119.
- xxvi. Chair with crossed legs. Fig. 119. (Ash. Mus.)
- xxvii. Staff of wood with gold leaf mount and bifurcated end (possibly used in spinning).
- xxviii. Reed pen (?).
- xxix. Wooden harp. Fig. 153. (Liv. Inst. Arch.)
- xxx. Two throwing sticks. Fig. 166. (Liv. Inst. Arch.)

Pottery, Types, two of No. 33. (Pl. xiv.) Two of No. 68. (Pl. xvi.). Five of No. 32. (Pl. xiii.) And five vases not corresponding with any precise type but of XII. to early XVIIIth Dyn. style.

No. 288.*Objects :*

Remains of sailing and rowing boats. Canopy preserved in good condition.

No. 292.*Object :*

Large flint implement.

No. 293. TOMB OF APU.*Objects :*

- i. Remains of inscribed box.
- ii. Piece of pitch covered with gilt foil.
- iii. Remains of wooden coffin.
- iv. Large earthenware bowl.

No. 294. TOMB OF NEBY, NEKHT, HERNEKHTA AND NEKHT-ANKH.*Objects :*

- i. Remains of head rest.
- ii. Two shells, p. 197.
- iii. Small earthenware dish.
- iv. Wooden handle.
- v. Mask and inscribed front of cartonage.
- vi. Hawk-headed wooden scoop. Fig. 141. (Pr. Coll. F. H. Price.)
- vii. Bronze figure, 9 cms. Fig. 141. (Pr. Coll. H. Martyn Kennard.)
- viii. Pottery dish, painted. Fig. 143. (MacGr. Coll.)
- ix. Pieces of faience vase. (MacGr. Coll.)
- x. Coffin of Nebý. (Boston Univ. Mus.)
- xi. Portions of inscribed coffin.

No. 320. TOMB OF NETER-NEKHT.*Objects :*

- i. Small alabaster vase.
- ii. Stela. Fig. 194. (MacGr. Coll.)
- iii. Small figures from boats, also steering oars and two masts.
- iv. Piece of painted coffin.

No. 323. TOMB OF HENU.*Objects :*

- i. Figures from boats, granary and brewery.
- ii. Ear of cartonage.
- iii. Figure of man carrying sack.
- iv. Stone weight.

No. 323—continued.

- v. Part of small round basket.
 - vi. Portion of inscribed wooden coffin.
- Four vases of pottery of irregular forms.

No. 324.*Objects :*

- i. Beads of blue glaze, ball shaped and bar shaped.
- ii. Pendant of metal.
- iii. Pottery model of farm yard (votive altar).
- iv. Large stone mortar.

Pottery, Type 6 (one).

No. 326.*Objects :*

- i. Beard of wood from cartonage mask.
- ii. Figures of men from boat and from industrial group.

No. 327.*Objects :*

Blue glazed drop beads.

No. 329. TOMB OF BAQTA.*Objects :*

- i. Two mirrors.
- ii. Two kohl palettes of dark green stone.
- iii. Fragments of wooden coffin.

No. 360. NEHERA, SON OF ZAT (SON OF KHNEHMETEP II. See p. 188).*Objects :*

- i. Blue glazed ball beads.
- ii. Stela. Fig. 195.

Pottery, Types 15, 26, 27,* and one dish.

No. 361. Pottery, Types 1, 15, 25, 26 (two), 37, 39.**No. 362. TOMB OF HA-ATEF-A.***Objects :*

- i. Wooden head rest.
- ii. Figure of girl (basket gone from head).
- iii. Fragments of wooden coffin.

Pottery, Types 3, 15, 25, 32.

No. 363.*Objects :*

- i. Steersman and other figures of boat.

No. 363—*continued.*

- ii. Seated female figure.
- iii. Two seated figures (man and woman).
- iv. Man with tub from granary.

Pottery, Types 1, 5, 13, 26, 32, 38.

No. 365. TOMB OF HENUÏT.*Objects :*

- i. Wooden figures from boats, and industrial scenes.
- ii. Portions of painted coffin.

Pottery, Types 13 (three), 15, 25, 26 (two), 32, 39 (two), 40, 41.

No. 366. TOMB OF KHETÏ, found undisturbed, but filled with limestone and dust. (Objects now in Fitz. Mus.)*Objects :*

- i. Coffin with formulæ only.
- ii. Model representing baking and brewing. Fig. 124.
- iii. Small granary.
- iv. Model of small sailing boat.
- v. Model of small rowing boat.
- vi. Model representing sacrifice of ox. Fig. 94.

Pottery, Types 2 thick flat dishes, also one of form 36, height 12 inches.

No. 367. TOMB OF HETEP-EN-NEBA.
Fragments of wooden coffin.**No. 374.***Objects :*

- i. Small mirror.
- ii. Carnelian and blue glazed bar beads.

Pottery, Types 9 (two), 10,* 32 (two).

No. 379.

Sandal of wood and leather.

No. 380.*Objects :*

- i. Figures and oars from boat.
- ii. Figures from brewing group.
- iii. Model of bull lying down being fed (?) by girl.
- iv. Figure of embalmed body from boat (as in Fig. 92).
- v. Blue ball beads.
- vi. Piece of ivory.
- vii. Pottery figure, seated (no head).

No. 382.*Objects :*

- i. Two figures from model groups.
- ii. Corner of model granary.
- iii. Beads of blue glaze and carnelian.
- iv. Metal pendant.
- v. Blue glazed circular plaque.
- vi. Alabaster vase.
- vii. Ivory pin.
- viii. Mirror (small).
- ix. Kohl palette of stone.

Pottery, Types 15, 24.

No. 384. TOMB OF ARÏT-HETEP.

- i. Fragments of wooden coffin.
- ii. Pottery vases, types 9, 61.*

No. 386.*Objects :*

- i. Remnants of rowing boat.
- ii. Remnants of brewery and sacrifice.
- iii. Wooden head rest.
- iv. Pottery dish.

No. 388.*Objects :*

- i. Remains of rowing boat.
- ii. Wooden model of knife.
- iii. One small pottery vase.

No. 389.

- i. Small kohl pot.
- ii. Mirror.

No. 392. TOMB OF BÂQT.

Fragments of wooden coffin.

No. 393. TOMB OF NETER-NEKHT.

Portion of wooden coffin.

Pottery, Types 1, 9, 19, 26, 45.

No. 394.*Objects :*

- i. Small granary.
- ii. Small sailing boat.
- iii. Small rowing and sailing boat (Ash. Mus.)
- iv. Small rowing boat of eight oars. (Pr. Coll. of H. Martyn Kennard.)

No. 400. TOMB OF USER-HET.

Fragments of wooden coffin.

No. 401. Pottery vase, type 16*

No. 402.*Objects :*

- i. Carnelian beads, oval in form.
- ii. Blue glazed bead of bar shape.

Pottery, Type 42 (one piece).

No. 403. *Pottery*, Types 1, 2, 3, 13, 15, 21, 35,* 39, 42.**No. 408.***Objects :*

- i. Remnants of boat and baking group.
- ii. Wood model of a duck.

No. 409.*Objects :*

- i. Remains of scribe's palette.
- ii. Figures from boat.
- iii. Baked clay figure of man (holding vase), 18 cm. Fig. 203.

No. 412. TOMB OF BAQTA.*Objects :*

- i. Model of rowing boat.
- ii. Figure of man carrying basket (from model of granary).
- iii. Remains of brewing group.
- iv. Bar shaped beads of blue and white glaze.
- v. Portions of coffin of BAQTA.

No. 413. Tomb of SENNA.**No. 417.***Objects :*

- i. Large mirror.
- ii. Nose and mouth of mask.

Pottery, Types 1,* 15, 42,* 54,* 62,* and four dishes.

No. 420.*Objects :*

- i. String dolls. Fig. 151. One with long hair and bead pendants. (Pr. Coll. F. Hilton Price.) One with bead clustered hair. (MacGr. Coll.)
- ii. Wooden head rest.
- iii. Part of brewery scene.
- iv. Scribe from granary, and another figure.
- v. Remains of boat.
- vi. Pottery stopper. (Ch. 440.)
- vii. Fragments of coffin with text.

Pottery, Types 13* (two), and a dish.

B.C.

No. 421.*Object :*

Scroll scarab.

No. 422. TOMB OF HETEPA AND HEN[NU].

- i. Fragments of coffins.

No. 423.*Objects :*

- i. Figures from rowing boat (decayed).
- ii. Figures from granary (decayed).

No. 424.*Objects :*

- i. Portion of wooden boat (decayed), and figures from rowing boat.
- ii. Three decayed wooden doll figures and piece of coloured wood, 5 cms.

No. 437.*Objects :*

- i. Two reed flutes. Fig. 153. (MacGr. Coll. and Liv. Inst. Arch.)
- ii. Wooden bed.

No. 440.*Objects :*

- i. Remnants of two boats, with armoured canopy.
- ii. Two small wooden figures.
- iii. Wooden model of duck.
- iv. Small vases from brewery scene.
- v. Piece of horn.
- vi. Pottery stopper, like in 420.

No. 444.*Object :*

Mirror.

No. 481. ROCK TOMB OF APA, SENT, TETA, THENNA. Fig. 27. AND b, OF KHNUMU-NEKHT, SEBEKHETEP, AND KHETY.*Objects :*

- i. Nine alabaster vases. Fig. 28.
- ii. Two alabaster head rests with fluted pillars. Fig. 28. (MacGr. Pr. Coll. and Duke of Portland Pr. Coll.)
- iii. Remains of boat (decayed).
- iv. Remains of wooden coffins.

No. 482. TOMB OF BEBA PEPEY-NA. Fig. 29. (Fragments of coffin.)

No. 487. TOMB OF SENEPU. Fig. 102. (Pl. v.)*Objects:*

- i. Mirror.
- ii. Wooden box (decayed). Fig. 102.
- iii. Two jewels in form of fish, and small lions, charm case (filigree), mounted scarab, bracelets, pendants and stones. Figs. 104-5. (Cairo Mus.)
- iv. Necklaces of berries, small shells and scorpions' stings.
- v. Glazed bar beads (3 cms.).
- vi. Nine alabaster vases. Fig. 106.
- vii. Wooden inlaid box. Fig. 103.
- viii. Ivory inlaid box. Fig. 103.
- ix. Smaller box as above. Fig. 103.
- x. Hair (false plait).
- xi. Very decayed remains of (?) musical instrument.
- xii. Painted model of man and dog in unbaked clay. Fig. 194.
- xiii. Model of brewer (same material). Fig. 194.
- xiv. Cylindrical ivory vase with loop handle and four legs. Fig. 107.
- xv. Faience vase, lotus leaf pattern, lid plain. Fig. 107.
- xvi. Three ivory hair pins and kohl stick. Fig. 107.
- xvii. One wooden kohl stick.
- xviii. Metal pin and needle.
- xix. Kohl palette and kohl pestle. Fig. 107.
- xx. Pieces of antimony and hæmatite.
- xxi. Large earthenware dishes and stoppered vases of type 45.
- xxii. Remains of coffin and cartonage.

No. 500. TOMB OF MA'A, DISTRICT INSPECTOR. (Found undisturbed.) Fig. 148.*Objects:*

- i. Sailing boat with representation of dead figure on board. Fig. 91. (Ash. Mus.)
- ii. Rowing boat with canopy, conveying the dead. Fig. 91. (Cairo Mus.)
- iii. Model of granary.
- iv. Wooden beard and ears from cartonage mask.

No. 500—continued.

- v. Bird's head of carved wood.
- vi. Blue glazed ball beads.
- vii. Three beads of carnelian.
- viii. Painted and inscribed coffin. (Liv. Inst. Arch.)

Pottery, Types 3, 17, 25 (small), 45 (two), and 46.

No. 501.*Objects:*

- i. Twenty-one ball beads, blue-green glaze, of different sizes.
- ii. Three cylindrical blue-green beads; also one carnelian bead.
- iii. Sea shell, broken.

Pottery, Types 4, 5, 18, 38, 40, 42, 58.

No. 502.*Objects:*

Three pieces wood.

Pottery, Types 15, 16, 26, 32 (two), 40.

Near 502. Four pots, portion of carved stone and model of oar(?).

No. 503.

Pottery. Types 1, 15, 26, 32 (two), four bowls and one dish.

No. 505.

Pottery, Types 15, 18, 38.

No. 506.

Pottery, Types 34 (four), 51,* with a dish.

No. 507. TOMB OF REMU-SHEN AND OF HENU.*Objects:*

- i. Portion of inscribed and painted coffin of HENU (Syracuse Mus.).
- ii. Number of green glazed ball beads, etc.

Pottery, Types 6 (two), 9, 11, 15, one dish and two pots with lips.

No. 508.*Objects:*

- i. Portion of decayed boat.
- ii. Portion of inscribed stone.
- iii. Head rest.

No. 509.*Objects:*

- i. Fifty ball beads, light green glaze.
- ii. Small number of cylindrical light green glaze beads.

No. 509—*continued.*

- iii. Small button seal, glazed.
- iv. Cylindrical bead, light green glaze, decorated.
- v. Bronze head piece of model mast, with rings.
- vi. Sea shell.

No. 510.*Object :*

Small green pottery disc, 3 cms. diameter.

No. 511.*Objects :*

- i. Masts, part of sail, figures and oars from model boats.
- ii. Figures from models of industrial groups.
- iii. Ear of cartonage.
- iv. Fragments of coffin.
- v. Large bronze mirror; another smaller.
- vi. Battle axe on staff. Fig. 165. (Cairo Mus.)
- vii. Small green glazed vase.
- viii. Number of small glazed beads and bronze beads. Three large pendants of carnelian, and large carnelian ball bead.
- ix. Ear-ring of silver.
- x. Large flint implement.
- xi. Three small bronze tools with handles.
- xii. Head rest of wood.

Pottery, Types 16, 27, 34, 37, 40 (two), two dishes and pottery figure.

No. 512.

Pottery, Types 1 (two), 13 (three), 15 (two), 16, 20, 25, 26, 40.

No. 513.*Objects :*

- i. Shell.
- ii. Piece of carved stone.

Pottery, Types 1, 3, 16, four bowls and one dish.

No. 514.*Objects :*

- i. Arm of wooden figure.
- ii. Twelve sea shells.
- iii. Wooden pin 14 cms. long.
- iv. Ear of cartonage.

No. 514—*continued.*

- v. Bone pin, 10 cms. long, and two bones of a bird.
- vi. Piece of translucent green stone.

Pottery, Type 32.

No. 515. TOMB OF KHETY-SENB.*Objects :*

- i. Wooden vase.
- ii. Thirty-one large green glazed beads, three carnelian beads, number of smaller green glazed beads and flat circular ones.
- iii. Wooden figure (decayed).
- iv. Eleven large seeds.
- v. Flint implement.
- vi. Fragments of coffin.

Pottery, Type 7.

No. 516. TOMB OF ARYT-HETEP AND Y-EN-MUT.*Objects :*

- i. Wooden figure representing embalmed body.
- ii. Eighteen doll figures from rowing boat, and long oars.
- iii. Wooden figures from bakery scene; bakery table and model of beer vat.
- iv. Two flint implements.
- v. Fragment of inscribed stone.
- vi. Number of flat circular green glazed beads, ball beads, and beads of shell, crystal and bronze.
- vii. Fragments of inscribed coffins.

Pottery, Type 6.

No. 517.*Objects :*

- i. Four fragments of stone (? from stela).
- ii. Portions of inscribed coffin.
- iii. Small vase and cover.
- iv. Four long green glazed beads.
- v. Several wooden figures from groups or boats.
- vi. Leg of chair.

Pottery, Type 46.

No. 518.*Object :*

One pot, type 13.

No. 519.*Objects :*

- i. Two inscribed stone fragments.
- ii. Reed mat.
- iii. Portions of inscribed coffin.
- iv. Figure seated, female, painted yellow, and another figure.

Pottery, Type 8.

No. 521.*Object :*

Male figure, stooping, from bakery scene.

Pottery: Large dish and three small dishes.

Between 521 & 522. Two stone slabs (offering tables) with circular hollows.

Between 521 & 523. Square pottery box with corner compartments.

No. 522.*Objects :*

- i. Vase (alabaster).
- ii. Seven wooden figures from groups.
- iii. Small seated female figure.

Pottery, Types 39 (two), and one dish.

No. 523.*Object :*

Figure from bakery scene.

No. 524.*Objects :*

- i. Pair of sandals.
- ii. Fragment of wood from a box.

Pottery, Types 12, 16, 26, 28.

No. 525.*Object :*

Decayed model of animal's head.

No. 526.*Objects :*

- i. Two models of pomegranates (?).
- ii. Portion of carved stone.
- iii. Wooden figures seated, raking fire.

Pottery, Types 19, 32, 39, 45 (two).

No. 533.*Objects :*

- i. Inlaid eyes (ivory on bronze) from cartonage.
- ii. Models in bronze of axe and chisel.
- iii. Large light-blue glazed bead.

No. 533—continued.

- iv. Two broken vases of pottery, with modelled figures. Carved stone.

Pottery, Types 1, 3 (two), 4, 9, 13, 14, 15, 18, 20 (two), 21 (three), 24, 26 (two), 27, 28, 32, 39, 40, 43.

No. 534. TOMB HENUA.

Fragments of coffin.

No. 535.*Objects :*

Three pieces of inscribed wood.

Pottery, Types 14, 15 (two), 16, 32 (three), 38, 40.

No. 536.*Object :*

Bronze tool (? model of axe).

No. 539.*Objects :*

- i. Two beads.
- ii. Five decayed figures from groups.
- iii. Figures from rowing boat, and hull

Pottery Types, 2, 3, 13 (two), 14 (two) 18, 26 (three), 39, 40, and five dishes.

No. 540.*Objects :*

- i. Wooden stand for figure—with feet painted in centre.
- ii. Portion of wooden sandal, broken two pieces.
- iii. Six decayed wooden figures, four fragments of arms, etc., also two pieces resembling cow's legs.
- iv. Figures from granary and bakery scene.
- v. Sea shell and one ball blue-green glaze bead.
- vi. Large portion of cane basket.

Pottery, Types 14 (small), 15, 16, 32, 43 (two).

No. 541.*Objects :*

- i. Fifty-three blue-green glaze beads, disc-shaped; also thirty-six yellow of the same form.
- ii. Silver coiled ring.
- iii. Horn 36 cms. long.
- iv. Two decayed wooden figures.
- v. Pair of wooden sandals, one having two pegs and portion of strap.

No. 541—continued.

- vi. Painted wooden shield, in three pieces, black spots on white ground.
 - vii. Four pieces of painted wood, and two oars (?) from small boat.
 - viii. Child's bed, Fig. 190. (Liv. Inst. Arch.)
 - ix. Mat from the above.
- Pottery*, Types 13, 15, 32, 37.

No. 545. TOMB OF HENNU.*Objects :*

- i. Number of seeds.
- ii. Number of small green glaze beads, also carnelian ball beads; two glazed cylindrical beads and scarab.
- iii. Sealed pot.
- iv. Copper mirror.
- v. Fragment of wooden model, and piece of wood.
- vi. Wooden model oar.

Pottery, Types 14, 16 (two), 36, 37, 40, 42, 49,* and fragments of pottery object decorated with figures modelled in relief.

No. 546.

- i. Model of bull (decayed wood).
 - ii. Four decayed wooden figures and two fragments.
 - iii. Female figures with long hair wigs.
- Pottery*, Types 15, 21, 25.

No. 547.*Object :*

Bird figure in pottery.

Pottery, Types 13, 15 (two), 32.

No. 548.*Objects :*

- i. Two wooden figures and fragments.
- ii. Arms from large standing figure carrying basket.
- iii. Steering oar from boat, and two vases.

Pottery, Types 4, 9, 13, 18, 26, 32 (two).

No. 549.*Objects :*

- i. Ox's skull with horns, and other bones.

No. 549—continued.

- ii. Wooden figure, painted.
- Pottery*, Types 15 (two), 25, 26 (two), 32 (two), 42.

No. 551.*Objects :*

- i. Large canopy from boat, one rowing figure and one standing.

Pottery, Types 6, 14 (three), 16, 25, 28, 33, 42, four small dishes, one large, and one bowl.

No. 554.*Objects :*

- i. Portion of inscribed coffin.
- ii. One model of oar.

Pottery : Dish.

No. 555.*Objects :*

- i. Wooden figures from groups.
- ii. Oar and fragments from boats.
- iii. Portions of wooden head rest.
- iv. Ox's skull.
- v. Portion of inscribed coffin.

Pottery, Types 6, 15, 32, 33.

No. 556.*Objects :*

- i. Torso of a woman. Fig. 137. (Liv. Inst. Arch.)
- ii. Portion of wooden doll figure.
- iii. Boat and wooden figures (decayed).
- iv. Obsidian kohl stick.
- v. Four green glazed ball beads.
- vi. Leg of stool (decayed).
- vii. Fragments of inscribed coffin.

Pottery, Types 9, 33 (five).

No. 558.*Objects :*

- i. Four figures, oar, and spar from model boat.
- ii. One grotesque wooden figure.

Pottery, Types 15, 26, 37.

No. 560.*Objects :*

- i. Cylindrical block of wood in three pieces (probably handle of coffin lid left in chamber after being cut off, as was commonly the case).

Pottery, Types 8, 14, 15, 26, 40.

No. 561. TOMB OF UA'AT.*Object :*

Portion of inscribed coffin.

Pottery : Seven dishes.**No. 562.***Pottery,* Types 25, 26, 37, 39, 40.**No. 563.***Objects :*

- i. Block carved wood.
- ii. Four decayed wooden figures.
- iii. Model of table from bakery scene.

Pottery, Types 13, 18, 37, 40, and one dish.**No. 564. TOMB OF HENNUA.***Objects :*

- i. Numerous model figures from boats, oars, etc. (all decayed).
- ii. Three model copper instruments.
- iii. Piece of painted pottery.
- iv. Portion of inscribed coffin.

Pottery, Types 13, 25, 28, 40.**No. 566.***Objects :*

- i. Nineteen decayed wood figures from model boats.
- ii. Decayed model of boat.
- iii. Figures, three models of vases in wood, and table (from groups of beer making, baking, and sacrifice).
- iv. Portion of inscribed coffin.

Pottery, Types 15, 16, 36, 45.**No. 567.***Object :*

Metal lamp, broken.

No. 569.*Objects :*

- Pottery figure.
- Small green glaze seal with modelled eye on back.
- iii Chair with four legs.
- iv. In box, head rest.
- v. Remnants of coffin.

Pottery, Type 12.**No. 570.**

Decayed carved wood figures from funereal barque.

No. 571. TOMB OF AMENY.

Fragments of coffin.

No. 572.*Objects :*

- i. Three decayed wooden figures from rowing boat.
- ii. Female stooping figure from bakery scene.

No. 573. TOMB OF REMUSHEN.

Fragment of coffin.

No. 574.*Objects :*

- i. Nine wooden figures, ox, several pieces of inscribed wood, and fragments of models.
- ii. Flint object.
- iii. Portion of sandal.
- iv. Large wooden model of leather quiver.
- v. Large wooden model of shield.

Pottery, Types 2, 16.**No. 575. TOMB OF KHETY-A (found undisturbed). (Objects now in the Ash. Mus., Oxford.)***Objects :*

- i. Large number of beads from collar upon neck.
- ii. Model oar and spar.
- iii. Large coffin of Khetya.
- iv. Sailing boat, seven figures, canopy and punters.
- v. Large granary (opening doors) full of grain, four figures of labourers, two seated.
- vi. Female carrying basket, dwarf carrying load on head. Fig 131.
- vii. Group with woman spinning and two seated figures weaving. Fig. 131. (Liv. Inst. Arch.)
- viii. Bakery scene and sacrifice, eight figures, enclosed. Fig. 127.
- ix. Portion of smaller coffin of Khetya.
- x. Rowing boat with sixteen figures and sail.

Pottery, Types 13, 40.**No. 576. TOMB OF UART-HETEP.***Objects :*

Six portions of inscribed coffin.

Pottery, Types 16, 26, 37, and one large dish.

No. 577. TOMB OF ARYT-HETEP.*Objects :*

- i. A few glazed globular beads.
- ii. Female figure, seated, from bakery scene.

Pottery, Types 13, 15 (two), 18, 19, 21, 25 (two), 27, 38, 39 (two), 42, with four dishes, one bowl, and one vase with five indents in rim (type 55).

No. 578.*Objects :*

- i. Portions of inscribed coffin.
- ii. Decayed head rest.
- iii. Model of bull from sacrifice scene.

Pottery, Types 2, 9, 32, and six dishes.

No. 581. *Pottery*, Types 13, 16, 32, 40, 42, and two bowls.

No. 583. TOMB OF HETEP[H?].*Objects :*

- i. Rectangular stone palette.
- ii. Circular flint.
- iii. Decorated scarab.
- * iv. Blue glaze pendant.
- v. Three small glaze beads.

Pottery, Types 4 (small), 9, 18, 26, 27, 29, 32 (two), 40, 41.

No. 584.*Objects :*

- i. Two handles of coffin lids sawn off.
- ii. Horn.



FIG. 229.—MODEL OF SAILING BOAT, WITH CANOPY. TOMB 575.

No. 579. TOMB OF NEFERA.*Objects :*

- i. Portions of inscribed coffins.
- ii. Alabaster vase.
- iii. Six wooden figures.
- iv. Ear of cartonage.
- v. Parts of small wooden box.
- vi. Standing figures with flat-topped heads (as though intended to support something).

No. 580.*Objects :*

Two pieces of decayed wood models.

Pottery, Types 4 (small), 9 (variant), 15, 32.

iii. Ten decayed wooden figures.

iv. Decayed wooden box, and large oar.

v. Fragments of arms, legs, etc., from figures.

vi. Figures from granary and bakery.

Pottery, Types 1, 3 (two), 6, 13 (two), 14, 15, 17, 18 (two), 20, 23, 25, 29, 32 (three), 38, 39, 42, 43 (two).

No. 585. TOMBS OF KHNEK-NEKHTA AND NETER-NEKHTA (found undisturbed). Figs. 80, 81, 82, and pp. 89—100. (Now re-arranged in the Museum at Cairo.)

No. 585—*continued.**Objects :*

- i. Sacrifice group, six figures, including two females standing, one with fan and vase, other with basket and vase. Fig. 84.
- ii. Group of bakery and sacrifice, five figures. Fig. 84.
- iii. Two female figures, one with basket in hand, other basket on head. Fig. 85.
- iv. Sailing boat, eight figures and canopy. Fig. 86.
- v. Rowing boat, twelve figures. Fig. 87.
- vi. Rowing boat, twenty figures, spears and shields. Fig. 88.
- vii. Sailing boat, seven figures and canopy. Fig. 89.
- viii. Rowing boat, twenty-three figures. Fig. 163.
- ix. Granary with four figures; granary with four figures and one decayed. Fig. 90.
- x. Sandals. Fig. 80.
- xi. One small canopic box, with four masks inside. Fig. 83.
- xii. Coffin of Khnem-Nekhta. Fig. 167.
- xiii. Smaller coffin of Khnem-Nekhta.
- xiv. Large coffin of Neter-Nekhta. (Ash. Mus.)
- xv. Small coffin of Neter-Nekhta.
- b. Coffins of Khnem-hetep and of Khety-a (Munich Museum), in upper chamber (disturbed).

Pottery, Type 16.

No. 586. *Pottery, Types 1, 14, 15 (three), 23, 26, 27, 32 (three), 40, 45, 46.*

No. 587. *Pottery, Types 15 (two), 39, and one dish.*

No. 588. *Pottery, Types 4 (small), 27, 29, 32 (two).*

No. 590. *Pottery, Types 15, 16, 25, 29 (two).*

No. 591.*Objects :*

- i. Face carved in wood.
- ii. Large number of beads, white and green.
- iii. Copper instrument.

Pottery, Types 18, 32.

No. 592.*Objects :*

- i. Ear of cartonage.
- ii. Eleven decayed wooden figures and a number of fragments from model boats.
- iii. Part of woven sandal, and bottom of basket.
- iv. Portion of model granary and writing tablet.
- v. Portions of model bakery scene.

No. 595.*Objects :*

Large number of seeds.

Pottery, Type 32 (two).

No. 597. *Pottery, Types 15, 16, 26, 32, 37.*

No. 598. *Pottery, Types 6 (two), 15, 16, 39, 40.*

No. 600.*Objects :*

- i. Portion of scribe's inkstand, wood, with two circular ink wells (as in Fig. 128).
- ii. Handle of tool, and piece of wood.
- iii. Steps of granary.

Pottery, Types 15 (three, one small), 26 (two), 40 (two), one bowl, seven dishes and two fragments modelled.

No. 602.*Objects :*

- i. Wooden figure.
- ii. Handle of knife.

Pottery, Types 9 (two), 26 (two), 32 (two), 37 (two).

No. 605. *TOMB OF KHNEM-NEKHTA.*

Objects :

Portions of inscribed coffin.

Pottery, Types 4, 14, 15 (two), 21 (two), 25, 26, 32, 40 (two).

No. 606.*Objects :*

- i. Four decayed wooden figures and fragments.
- ii. Model sliding door of granary.
- iii. Two model figures (22 cms. high).

Pottery, Types 25, 28, 29, 32.

No. 607.*Objects :*

- i. Sea shell.
- ii. Seven green glaze ball beads, one

No. 607—*continued.*

- carnelian bead, and one cylindrical green glaze bead.
- iii. Piece of painted pottery.

No. 608. TOMB OF HENÿ AND KHETÿ.*Objects:*

- i. Large number of blue-green and white glaze cylindrical beads, two large darker glaze beads, twenty-nine large beads, dark green glaze.
- ii. Copper chisel (?).
- iii. Portion of alabaster cylindrical vessel.

Pottery, Types 1, 25, 32 (two), 37, 39, 40, and four dishes.

No. 609.*Object:*

Portion of head rest.

No. 611.*Objects:*

- i. Two decayed portions of coffin.
- ii. Staff.

Pottery, Types 15 (small), 16 (small), 26, 37, 39, and one dish.

No. 612. TOMB OF BAQTA.*Objects:*

- i. Twelve decayed doll figures and model of ox; several fragments of models.
- ii. Coffin handle and piece of coloured wood.
- iii. Portion of inscribed coffin.

Pottery, Types 14, 15, 16, 26, 32, 37, 40.

No. 613.*Objects:*

- i. Two wooden figures and models of basket and bird; piece of wood used as stand for figures.
- ii. Portions of three sandals.
- iii. Stand for figure driving ox—leg of ox.

Pottery, Types 2, 15, 16, 25, 27, 32 (two), 38, 40.

No. 614.*Objects:*

Models for bakery scene, stand of large figure with feet remaining,

No. 614—*continued.*

masts from boat, support of steering oar, figures and fragments.

Pottery, Types 26, 32 (two), 39.

No. 615.*Objects:*

Wooden figure and fragments.

Pottery, Types 2, 28 (two), 32, 40.

No. 616.*Objects:*

- i. Two wooden figures.
- ii. One female carrying bird, and one seated figure.
- iii. Fragments of inscribed wood.

No. 617. TOMB OF ARYT-HETEP.*Objects:*

- i. Large copper mirror.
- ii. Portions of inscribed wood.

Pottery, Types, two dishes.

No. 618.*Objects:*

- i. Three beads and one carnelian pendant.
- ii. Wooden figures, arms, etc.
- iii. Remains of models, industrial groups, etc.

Pottery, Types 1, 15, 28, 29, 32.

No. 620.*Objects:*

- i. Three beads of dark blue glaze.
- ii. Eleven beads of blue-green glaze, cylindrical, of different lengths.
- iii. Portions of bronze instrument.

Pottery, Types 3, 29, 32, 38.

No. 627. TOMB OF MERU-A.

Fragments of coffin.

Pottery, Types 13, 15, 16 (small), 37, 40.

No. 630.*Objects:*

- i. Twenty-six black globular beads.
- ii. Flat circular polished red stone bead.
- iii. Fourteen flat beads, pale green glaze.
- iv. Small pale green scarab.
- v. Small seal, pale green glaze.

Pottery, Type 32.

No. 633.*Objects :*

- i. Wooden dish. Fig. 130.
- ii. Portion of inscribed and painted stone.

No. 635.*Object :*

Bronze instrument.

Pottery, Type 25.

No. 637.*Objects :*

- i. Sixteen decayed wooden figures and decayed boat.
- ii. Seven pieces of inscribed coffin.
- iii. Models of steps.

No. 641.*Objects :*

- i. Bronze chisel.
- ii. Bronze shield, model.
- iii. Wooden figure (decayed), no arms.

Pottery, Types 3, 15, 26, 32, 34, 38.

No. 651.*Objects :*

- i. Three decayed wooden figures, and model of small bird.
- ii. Models from sacrifice scene.
- iii. Wooden jar and female figure kneading.

Pottery, Types 24, 32.

No. 652.*Object :*

Portion of inscribed coffin.

No. 653.*Objects :*

- i. Model of baking trough.
- ii. Carved wood.
- iii. Portions of two wooden figures
- iv. Small pottery vase.

No. 654.*Objects :*

- i. Three decayed doll figures.
- ii. Figures (very much decayed) from bakery scene.
- iii. Piece of inscribed wood.

Pottery, Type 32.

No. 655. TOMB OF AUÏ.*Objects :*

- i. Green glaze model of hedgehog. Fig. 140. (MacGr. Coll.)

No. 655—continued.

- ii. Green glaze cylindrical beads.
- iii. Blade of battle axe, p. 197 and Fig. 165. (Liv. Inst. Arch.)
- iv. Scribe's writing slab (?).
- v. Decayed wooden figures and fragments from rowing boat, and groups.
- vi. Inscribed painted cloth from cartonage.

Pottery, Types 6 (two), 15 (two), 18 (two), 23, 26, 32 (three), 40 (three).

No. 656.*Objects :*

- i. Portion of basket.
- ii. Model from bakery scene.

Pottery, Types 15 (two), 18 (two), 27, 32, 35, 37, 42.

No. 657.

Pottery, Types 3, 15 (two), 25, 32 (two), 37, 40.

No. 658.

Pottery, Types 2 (two, one small), 3 (small), 18, 26, 27, 32 (two), 40 (two).

No. 660. TOMB OF HETEP.*Object :*

Portion of stela of Hetep.

Pottery, Types 3, 15 (two), 32 (two), 34.

No 661.*Objects :*

- i. Decorated scarab.
- ii. Carnelian with hole bored through length.
- iii. Twenty-five ball globular beads of carnelian, different sizes.

Pottery, Types 10, 15 (two), 16, 26, 32 (two), 37, 39.

No. 662. TOMB OF KHETY.*Objects :*

- i. Twenty-two blue-green glaze beads
- ii. Large number of green and black glazed cylindrical beads.
- iii. Two green glaze hawk-head attachments for collar of beads.
- iv. Two bronze mast heads.
- v. Clay vase-form bead.
- vi. Arm of wooden figure.

No. 662—continued.

- vii. Portion of inscribed coffin.
Pottery, Types 33, 42, and two dishes.

No. 663.

- Object :*
Figure in pottery.
Pottery, Types 13, 15, 32 (four), 40, and one dish.

No. 664.

- Object :*
Portion of painted pot.
Pottery, Types 6, 25, 32 (two).

No. 666.

- Objects :*
i. Thirty-seven light green glaze globular beads.
ii. Bronze instrument.
iii. Hook of metal.

No. 672.

- Object :*
Wood figure.
Pottery, Types 15, 32 (two), 26, 39.

No. 676. COFFIN FRAGMENTS OF HETEPU
[TP ?].**No. 678.**

- Objects :*
i. Cord sling (like those used in modern Egypt).
ii. A few cylindrical glazed beads.
iii. One pendant.
iv. Bronze model tool.
Pottery, Types 13, 36.

No. 681.

- Object :*
Sandal.
Pottery, Type 42.

No. 682.

- Objects :*
i. Wooden figure.
ii. Wooden fragments.
iii. Shell.
iv. Portion of alabaster vase.
v. Pottery figure.
Pottery, Types 12, 37, 42.

No. 684.

- Object :*
Alabaster vase in form of a duck.
Fig. 111. (Cairo Mus.)

No. 684—continued.

- Pottery, Types 63—77, inclusive (Pl. xvi.), and six dishes—eighty-two pottery vessels in all. (Set in Ash. Mus.)

No. 685.

- Objects :*
Three beads; two globular green glazed, one cylindrical.
Pottery, Types 25, 28.

No. 688.

- Objects :*
i. Small scarab of green felspar without inscription.
ii. Four wooden figures.
iii. Figures and oars from model boats.
iv. Ka figure; portrait statue.
Pottery, Types 12, 15 (two), 25, 29.

No. 690.

- Object :*
Broken alabaster basin (five pieces).

No. 691.

- Objects :*
i. Small grotesque seal with figure in



FIG. 230. METAL SEAL, WITH GROTESQUE FIGURE OF A BOY. [HEIGHT $1\frac{1}{2}$ INS.]

- bronze (?). Height, 3 cms.
Fig. 230.
ii. Two pieces of jet (?).

No. 691—continued.

- iii. Agate pendant.
- iv. Four cylindrical green glaze beads.
- v. Several small fragments of bronze.

No. 692.*Objects :*

- i. Fragment of pottery figure.
- ii. Small stone statuette.

No. 693.*Objects :*

Two reeds from hand-loom.
Fig. 132. (Cairo Mus. and Liv.
Inst. Arch.)

No. 694.*Objects :*

- i. Two broken beads.
- ii. Small horn.
- iii. Fragments of wood.

No. 696.*Objects :*

- i. Lid of coffin inscribed and part of end of coffin inscribed. (Name not determinable.)
- ii. Wooden figure, and fragments of others.
- iii. Fragments of model boats.

Pottery, Type 25.

No. 699.*Object :*

Piece of inscribed coffin.

Pottery, Tall pottery stand, four small bowls and vase, Type 59.*

No. 700.*Objects :*

- i. Eleven wooden figures from groups, rowing boat, etc.
- ii. Canopy, from model of sailing boat.
- iii. Decayed fragments of wood.
- iv. Model of basket.
- v. Portrait statue (Ka figure).

No. 701.*Objects :*

- i. Twenty-nine globular beads of carnelian.
- ii. Small stone scarab, plain.
- iii. Model of oar and other traces of boats, etc.

Pottery, Types 18, 26, 32, 39, and a pottery dish.

No. 703.*Objects :*

Seventeen wooden figures from model groups, boats, etc.

Pottery, Types 15, 32.

No. 705.*Objects :*

Thirty-one pots.

Pottery, Types 15 (three), 16, 26, 29, 31 (four), 39, 40.

No. 706.*Objects :*

Five wooden figures, four oars, spars, wood blocks, and fragments from model boats.

Pottery, Types 13, 14, 15, 16, 32, 38 (two), 40.

No. 707. TOMB OF APA, A STEWARD (found undisturbed). Figs. 173, 174, 175. (Deposited by Sir John T. Brunner in the Liv. Inst. Arch.)*Objects :*

- i. Sailing boat, eight figures.
- ii. Rowing boat, ten figures.
- iii. Bakery scene, six figures. Fig. 125.
- iv. Tall female figure with basket and bird. Fig. 98.
- v. Granary, six figures. Fig. 120.
- vi. Outer and inner coffins.
- vii. Mask of cartonage. Fig. 176.
- viii. Preserved body. Fig. 177.
- ix. Cloth.

Pottery, Type 40.

No. 708.*Objects :*

- i. Pair of sandals.
- ii. Figures from rowing boat.

Pottery, Type 15.

No. 710.*Object's :*

- i. Seven bronze fragments.
- ii. Flint implement.
- iii. Glazed globular beads.
- iv. Decayed head rest.

Pottery, Types 14, 15, 16, 26.

No. 711. TOMB OF NEKHT, A STEWARD.*Objects :*

- i. Wooden models of boats and fragments.

No. 711—continued.

- ii. Tall figures from granary.

Pottery, Types 13 (two), 14 (two), 16, 17, 19, 26 (two), 32 (three), 37, 38 (two), 39, 40 (three), 42, 45.

No. 716.

Objects :

- i. Wooden figures, oars, and fragments from models of boats.
- ii. Incised inscribed portion of coffin.
- iii. Flint implement.

Pottery, Types 21, 26, 32.

No. 720—continued.

- vii. Two large hawk head clasps from collar, both in three fragments.
- viii. Few cylindrical black glazed beads.
- ix. Green glazed square lid from vase.

Pottery, Types 15 (small), 19, 25, 26 (two), 37, 40 (two), 43.

No. 722.

Objects :

- i. Steering oar, figures, etc., from model boats.
- ii. broken staff.

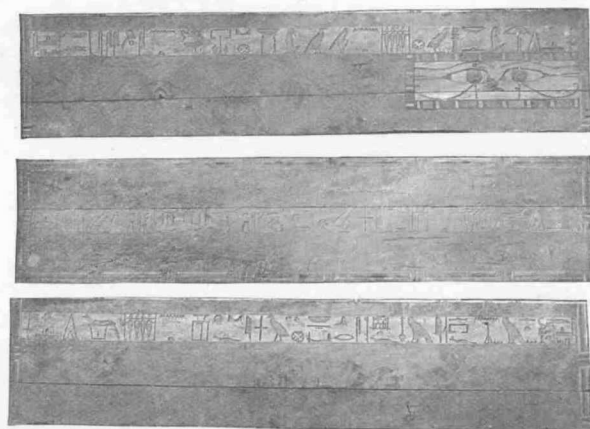


FIG. 231.—INNER COFFIN, SIDES AND LID, OF SEBEK-HETEP. TOMB 723.

No. 717. TOMB OF MERT.

Objects : Fragments of coffin.

Pottery, Types, 14, 42.

No. 720.

Objects :

- i. Sixteen wooden figures, oars, mast, fragments, canopy, and mummy figure from model boats and funereal barque.
- ii. Two ears and beard of cartonage.
- iii. Fragments of painted inscribed coffin.
- iv. Ka figure, standing, well preserved. Fig. 135 (Pr. Coll. H. Martyn Kennard.)
- v. Thirty green glaze globular beads.
- vi. Large number green glaze tubular beads.

- iii. Portions of inscribed coffin.

Pottery, Types 37, 40.

No. 723. TOMB OF SEBEK-HETEP, found undisturbed. (Objects now in the British Museum, W.C.)

- i. Rowing boat, ten figures.
- ii. Sailing boat and canopy, eight figures.
- iii. Granary, five figures.
- iv. Sacrifice scene, six figures and bull.
- v. Bow with feathered and tipped arrows. Figs. 161, 162.
- vi. Standing female figure.
- vii. Pair male sandals.
- viii. Set of bronze tools.
- ix. Ka figure of man, standing. Fig. 136.
- x. Outer and inner coffin. Fig. 231.

No. 724.*Object :*

Piece of inscribed coffin.

No. 728.*Objects :*

- i. Remains of granary.
- ii. Remains of bakery.
- iii. Remains of sacrifice.
- iv. Remains of boat.

Pottery, Types 6, 15, 23, 26 (two).

No. 741.*Objects :*

Eight decayed wooden figures, with arms, legs, and fragments.

No. 743. TOMB OF SETEN-EN-HETEP.*Objects :*

- i. Seven inscribed fragments of coffins.
- ii. Three bronze fragments of tools.

No. 744.*Objects :*

- i. Two pieces inscribed wood.
- ii. Carved stone, inscribed.

Pottery, Types 15 (small), 26, 40 (two).

No. 746. *Pottery*, Types 15 (three, two small), 16 (two), 26, 42, and one dish (broken).**No. 750.***Objects :*

- i. Flint implement.
- ii. Ten pots, two fragments.

Pottery, Types 14, 15 (two, one small), 29, 32 (two).

No. 751.*Objects :*

Two beads of blue glaze.

Pottery, Types 10, 15 (two), 16, 26, 32, 40 (two), and four dishes.

No. 752.*Objects :*

- i. Two wooden model shields.
- ii. Wooden figure [? Ka figure].
- iii. Two sliding doors of granary and decayed fragments of wood.
- iv. Eight wooden figures (decayed).
- v. Large wooden figure, possibly from bakery scene.
- vi. Cylindrical green and black glazed beads; six globular beads, green glazed.

No. 752—continued.

vii. Small vases.

viii. Portion of bronze tool.

Pottery, Types 2, 3, 4 (small), 6, 15 (two), 23, 25, 26 (two), 28, 32 (seven), 40 (three), 45, and two dishes.

No. 755.*Object :*

Fragment of wood.

Pottery, Types 9, 10, 13, 15 (two), 18, 25, 40 (two).

No. 757.*Objects :*

- i. Axe blade. Fig. 165. (Ash. Mus.)
- ii. Six wooden figures.
- iii. Remains of boats and models.
- iv. Staff.
- v. Portion of inscribed coffin (small).

Pottery, Types 4 (small), 14, 15 (two, one small), 26 (two), 32 (four), 34.

No. 759.*Objects :*

Model of beer vat, and fragments of wooden figures.

Pottery, Types 15 (small).

No. 761.*Objects :*

- i. Large number of cylindrical beads, green and white glazed.
- ii. Two glazed clasps for collar, re-strung. Fig. 101. (Liv. Inst. Arch.)
- iii. Winnowing fan (decayed), as in Fig. 122.
- iv. Wooden mummy-shaped coffin (? inner).
- v. Two green glazed decorated scarabs.
- vi. Small alabaster pot and cover.
- vii. Eight pots and fragments.

Pottery, Type 16 (small).

No. 762.*Objects :*

- i. Wooden figures (decayed).
- ii. Remains of boats, granary, etc.
- iii. Sacrifice.
- iv. Bone handle.
- v. Two flint implements.

No. 762—*continued.*

- vi. Small glazed ball beads.
- Pottery*, Types 15, 26, 32 (two), 40, and two dishes.

No. 763.*Objects :*

- Flint instrument.

Pottery, Types 15, 20, and four dishes.

No. 764.*Objects :*

- Small flat beads, disc shape.

Pottery, Types 13, 18, 24, 25, 28, 32, and two dishes.

No. 767.*Objects :*

- i. Fragments of doll figures, arms, etc.
- ii. Hawk-head pendant and few small beads.
- iii. Small stone vase.
- iv. Two pottery dishes.

No. 768.

Portion of inscribed and painted coffin.

No. 769.*Objects :*

- i. Three pieces of inscribed coffin.

No. 771.*Objects :*

- i. Five wood figures.
- ii. Part of model boat.
- iii. Ox skull.

Pottery, Types 3, 15, 25, 26 (two), 32.

No. 772.*Objects :*

- i. Seven wooden figures.
- ii. Spars and fragments from model boats.
- iii. Figures from sacrificial scene, seated and standing, one with arm raised over head.
- iv. Seven ball beads, green glaze.
- v. Bottom of basket.
- vi. Goat's skull.

Pottery, Types 6, 18, 26, and two dishes.

No. 773. TOMB OF ANPU-UA.*Objects :*

- i. Remains of sailing boat.

No. 773—*continued.*

- ii. Doll figure and fragment.
- iii. Portions of coffin of ANPU-UA. (Pomona Coll.)

Nos. 774 and 775 (one chamber). TOMB OF NEBT-HET-HETEP.*Objects :*

- i. Inscribed fragments of coffins.
- ii. Large jar.
- iii. Square pottery model with compartments (model granary, as in Fig. 209).
- iv. Bronze ring.
- v. One ball bead.
- vi. Fragment of pendant bead and one long bead.

Pottery, Types 1, 3, 15, 25, 26, 32, 40, 45, three dishes (one broken).

No. 777. TOMB OF HETEP.*Objects :*

- i. Nineteen wooden figures and fragments.
- ii. Steering oar, masts and fragments from model boats.
- iii. Portion of head rest.
- iv. Throwing stick, as in Fig. 166.
- v. Twelve large green glazed ball beads.
- vi. Two bronze tools.
- vii. Two small pieces bronze.
- viii. Circular vase lid of alabaster.
- ix. Shell (p. 197).
- x. Inscribed coffin.
- xi. Models from rowing boat and bakery.

Pottery, Types 6 (two, one small), 25, 26, 40.

No. 778.*Objects :*

- i. One green glazed ball bead.
- ii. Wood figures.
- iii. Remains of granary.
- iv. Sacrifice.
- v. Boats, etc., decayed.

Pottery, Types 6, 9, 15, 25, 26, 36, 40.

No. 780.*Objects :*

- i. Broken box, with pieces of bone

No. 780 — *continued.*

- ornamented with circles and lines. (Cairo Mus.)
- ii. Flint implement.
- iii. Portion of vase.
- iv. Green glazed scarab.
- v. Bronze instrument.

Pottery, Vase, Type 32.

Nos. 781 to 789. All empty—south of No. 33.**No. 790.***Objects :*

- i. Six decayed coffins.
- ii. Copper mirror.
- iii. Green glazed ball beads.
- iv. Fifty-eight carnelian beads.
- v. Silver double hawk pendant.
- vi. Remains of small wooden box.

Pottery, Types 2, 26, 32, 40, 42.

No. 791.*Objects :*

- i. Wooden figures, arms and fragments.
- ii. Bottom of basket.
- iii. Side of granary, and door of granary.
- iv. Inscribed fragments of coffin.

Pottery, Types 9, 14, 15, 16, 18, 32 (two), 42.

No. 794.

Piece of wood (handle of coffin).

Pottery, Type 26.

No. 796.*Objects :*

- i. Wooden basin, four rope holes and two slots. Fig. 130. (Liv. Inst. Arch.)
- ii. Small shield from model of boat.

Pottery, Types 15 (two), 25, 28, 32, 39, and one dish.

No. 797.*Objects :*

- i. Two wooden figures.
- ii. Shell fossil and fragments (p. 197).

Pottery, Types 13 (small), 16, 42.

No. 800. TOMB OF DET-ANPET. Fig. 99.*Objects :*

- i. Three pairs female's sandals. (One pair, Liv. Inst. Arch.)
- ii. Coffin inscribed.

Nos. 801 to 809. All empty.**No. 810.***Objects :*

Pieces of inscribed wood.

Pottery, Types 6, 15, 25, 28, 29, 40, and fragments of dish.

No. 812.*Objects :*

- i. Small alabaster vase (broken two pieces).
- ii. Large alabaster vase.
- iii. Eleven wooden figures (very much decayed).
- iv. Arms, oars, and other remains of model, boats and groups, figures from bakery scene (seated), model of vat and yoke for carrying water-pots.

Pottery, Types 15 (two) 26, 32.

No. 813.*Objects :*

Decayed wood figures.

No. 816.*Objects :*

- i. Four wood figures.
- ii. Model of case of spears.
- iii. Figure of girl with basket.
- iv. Remains of boats with armour (shields, etc.).
- v. One pottery dish.

No. 817.*Object :*

Model of oar.

No. 821.*Object :*

One ball bead, pale green glaze.

Pottery, Types 40, and one dish.

Nos. 822 and 823.*Objects :*

- i. Sixteen wooden figures.
- ii. Two bakery troughs and other fragments and models, figures from bakery scene, beer vat and table with circular holes for vases, remains of legs (?), press-in vat, figures from rowing boat.
- iii. Portions of head rest.

No. 823—continued.

- iv. Forty - eight green glazed ball beads.
- v. Twenty carnelian varied beads.
- vi. Number of smaller green glazed beads.

Pottery, Types 4 (small), 45.

No. 824.

Objects :

- i. Arm of wooden figure.
- ii. Reed mat.

No. 828.

Objects :

Two large pots with mud covers.
Type 45.

No. 831.

Objects :

- i. One globular bead of glaze.
- ii. Seven pots.

Pottery, Type 25.

No. 832. TOMB OF HET-HER-HETEP.

Objects :

- i. Twelve green glazed beads.
- ii. Fragment from model boat.
- iii. Portions of inscribed coffin.

Pottery, Type 36.

No. 834. TOMB OF HENNU.

Objects :

- i. Decayed boat.
- ii. Pieces of inscribed coffin.

No. 840.

Objects :

- i. Bronze razor blade.
- ii. Small green glazed scarab.
- iii. Two donut nuts.
- iv. Pieces of plaited hair.
- v. Two wooden figures.
- vi. Two small baskets.

Pottery, Types 9, 34 (two, one small), 37, 39, 42, and two dishes.

No. 841.

Objects :

- i. Three wooden figures.
- ii. Staffs.
- iii. Bottom of basket.

Pottery, Types 4, 15 (small), 25, 32, and two dishes.

B.C.

No. 842.

Objects :

- i. Sandal.
- ii. Wooden models.
- iii. One pottery vase.

No. 843.

Objects :

- i. Three doll figures.
- ii. Two flint implements.
- iii. Wood model on stand.

Pottery, Types 14, 15, 16 (small), 32, 40.

No. 844.

Objects :

Small wooden figures and fragments.

No. 845.

Objects :

- i. Two bronze dishes. Fig. 142. (Upper, Liv. Inst. Arch. Lower, Cairo Mus.)
- ii. Two alabaster vases. Fig. 31. (Liv. Inst. Arch.)
- iii. Twelve wooden figures from boats and granary.

Pottery, Types 15 (three), 16, 26, 28, 32, 39, 42, and one dish.

No. 847.

Objects :

- i. Three beads (ball), green glaze.
- ii. Cylindrical beads.
- iii. Two fragments of wooden figures.

No. 850. TOMB OF NETER-NEKHTA.

Objects :

- i. Nine wooden figures and other models in decayed wood.
- ii. Portion of head rest.
- iii. Portion of inscribed coffin.
- iv. Boat and other fragments.
- v. Decayed model of female with basket, and models of brewing, etc.

Pottery, Types 15 (two), 25, 29 (two), 32, 40, 41.

No. 851.

Objects :

- i. Wood figures, remains of granary, boat, etc.
- ii. Decayed group of two figures in wood (sitting side by side).

No. 851—continued.

Pottery, Types 9 (variant), 13 (two), 14, 15, 18, 19, 32.

No. 852.

Objects :

- i. Head rest (two pieces).
- ii. Scarab and two beads.
- iii. Shell (p. 197).
- iv. Flint implement.
- v. String bag (as in Fig. 116).

Pottery, Types 9, 13, 15, 32, and three dishes.

No. 854.

Objects :

- i. Bronze mirror.
- ii. Bronze shield-shaped tool.

Pottery, Types 13 (variant), 14 (variant), 15 (two), 16 (two), 20, 24, 25, 26 (three), 40 (two).

No. 856.

Objects :

- i. Two large sea shells (p. 197).
- ii. Piece of painted curved wood.
- iii. Small alabaster vase.

No. 857. *Pottery*, Types 13 (two), 14, 15, 18, 24, 25, 32, 34, 40, 55,* with eight dishes and one large bowl.

No. 859.

Objects :

- i. Seven decayed wooden figures and fragments.
- ii. Figures from bakery scene.

Pottery, Types 1 (small), 2,* 13 (two), 15 (three), 26, 29, 32 (three), 40.

No. 860.

Objects :

Portions of inscribed coffin.

Pottery, Types 32, 37 (two), 39, 40, and one dish.

No. 861. TOMB OF DET-ET AND AP-HETEP(?).

Objects :

Portions of inscribed coffins.

Pottery, Types 42, 43.

No. 862.

Objects :

- i. Remains of boats.
- ii. Figure of woman with basket.
- iii. Other wood figures.

No. 862—continued.

Pottery, Types 15, 20, 26, 28, 42.

No. 863. TOMB OF RNT.

Objects :

- i. Portions of inscribed coffin.
- ii. Small alabaster vase.
- iii. Flint implement.
- iv. Ten wooden figures.
- v. Boats.
- vi. Thirty-four blue glazed beads.

Pottery, Types 46 (two), and seven dishes.

No. 865.

Objects :

- i. Mirror.
- ii. Fifteen portions of decayed wooden figures.
- iii. Broken rudder, oar and several fragments of oars (decayed), piece of canopy, and other portions of model boats.
- iv. Hull of rowing boat.
- v. Remains of sailing boat, with shield, probably containing warrior.
- vi. Remains of bakery and granary.
- vii. Girl with basket and geese.

Pottery, Types 4, 13 (large), 14, 15 (six), 16 (two), 19, 24, 25, 27, 29, 32 (three), 34 (two), 37, 39, 40 (three), 42.

No. 868.

Objects :

- i. Coloured decorated cartonage basket.
- ii. Boat with small figures. (Pr. Coll. H. Martyn Kennard.)
- iii. Few cylindrical green glazed beads.
- iv. Coloured and painted "seat."
- v. Miscellaneous figures, oars, etc.

Pottery, Type 45.

No. 870. TOMB OF UARTI-HETEP.
Fragments of coffin.

No. 871. TOMB OF KHNEK-NEKHT.

Objects :

- i. Bone needle.
- ii. Plaits of hair.
- iii. Alabaster vase and lid.
- iv. Stone palette.
- v. Twenty green glazed beads.

No. 871—continued.

- vi. Portions of coffin.

Pottery, Types 1, 12, 24, 32 (two), 39, 46.

No. 873.*Objects :*

- i. Bone 7 cms. long.
- ii. Fragment of wood with copper nail.

Pottery, Types 13, 14, 15 (three), 16 (small), 18, 20, 23, 28 (two), 32 (three), 39, 40, 42, and eight dishes.

No. 874.*Object :*

- Flint implement.

Pottery, Types 36 and one dish.

No. 875.*Objects :*

- i. Piece of inscribed and painted wood of coffin.
- ii. Five decayed wooden figures.
- iii. One large wooden figure.
- iv. Model of standing ox.
- v. Fragments of arms, etc., from figures.
- vi. Fragments of model bakery scene, vases.

Pottery, Types 13, 15 (two), 32, 34, 35, 37 (two, one large), 42, 43 (small), 45.

No. 877.*Object :*

- Oryx horn.

Pottery, Types 22,* 23, 25 (two), 27 (large), 28, 43 (two).

No. 879. TOMB OF KHNEM.*Objects :*

- i. Inscribed coffin.
- ii. Thirty-six large green glazed ball beads. (Cairo Mus.)
- iii. Two agate or carnelian pendants.
- iv. Few smaller beads and one carnelian bead.
- v. Stone palette. (Cairo Mus.)
- vi. Seated wooden figure.

No. 880. TOMB OF KEKA.*Objects :*

- i. Thirteen green glazed ball beads and two others.
- ii. Three small alabaster pots.

No. 880—continued.

- iii. Fourteen beads, green glazed.
- iv. Two pieces carved stone.
- v. Portion of inscribed coffin.
- vi. Six pots and base of pot.
- vii. Large pot.

Pottery, Types 6, 7, 41.

No. 881.*Object :*

- Piece of rope.

Pottery, Types 13, 37 (two), and two dishes.

No. 882.*Objects :*

- i. Blue painted steering oar and masts.
- ii. Carved head (very much decayed).
- iii. Gold leaf.

No. 883. TOMB OF UN-NEFER.*Objects :*

- i. Four inscribed portions of coffins.
- ii. One model shield and fragment of another.
- iii. Ball shaped stone.

No. 885.*Objects :*

- i. Plain coffin.
- ii. Wooden jar. (Ash. Mus.)

No. 886. TOMB OF KEKA, A STEWARD, AND HETEP-BU.*Objects :*

- i. Coffin (broken), painted and inscribed.
- ii. Three small scarabs, carnelian, green glazed.
- iii. Plait of hair.
- iv. Strung beads, small, black and white alternately.
- v. Small basket and cover, containing small wooden pot and cover.
- vi. Remains of rowing boat, figures, etc.

No. 888.*Object :*

- One spiral fossil (broken) (p. 197).

No. 1,000. Pit.*Objects :*

- i. Wooden figures and parts of models (p. 34).